



**INTEGRATED LIFE PROJECT ONE NATURE**

# **LAYMAN'S REPORT 2026**



**NATURA 2000 FOR LIFE**



## ABOUT THE PROJECT

### Managing the Natura 2000 network of protected areas benefits both nature and people.

It is not just about protecting rare species and habitats, but also about preserving the benefits nature provides us – known as ecosystem services.

The One Nature project – officially the Integrated LIFE Project for the Natura 2000 Network in the Czech Republic (LIFE-IP: N2K Revisited) – has contributed to safeguarding natural diversity and enhancing ecosystem services within the protected areas of this European network. Its aim was to strengthen the management system of Natura 2000 sites, ensuring their conservation is effective in the long term, scientifically sound, whilst also being comprehensible and beneficial to society.

Through more effective management planning, supporting research and its practical application, as well as fostering cooperation with landowners and land users, the project has helped secure appropriate management for these valuable areas. In doing so, it has contributed to their preservation not only for the current generation but for the future as well.

The Natura 2000 network of protected areas consists of two different categories of sites:

- Sites of Community Importance (SCIs) / Special Areas of Conservation (SACs) focus on the protection of habitats or species that are threatened on a pan-European scale (in the Czech Republic, both are referred to as EVL).
- Special Protection Areas (SPAs) protect sites that are particularly important for migratory birds. These are primarily breeding grounds, wintering sites, or crucial stopovers during migration.

These sites may or may not overlap with nationally protected areas established to safeguard Czech conservation interests.

*Upupa epops*





## MONITORING THE STATUS OF CONSERVATION FEATURES

Biodiversity assessment often relies on national or regional summaries. These are suitable for reporting purposes but are of little use for the management of specific sites. We have focused on improving assessments at the individual site level.

### Precise localisation:

We assess the condition right where the species and habitats occur – at the level of individual protected areas or specific sub-sites. Only then can we truly say whether our management is working.

### Adaptive management:

We embrace the adaptive management principles – condition monitoring is an ongoing process of review, enabling us to continuously improve site management.

### Digital support:

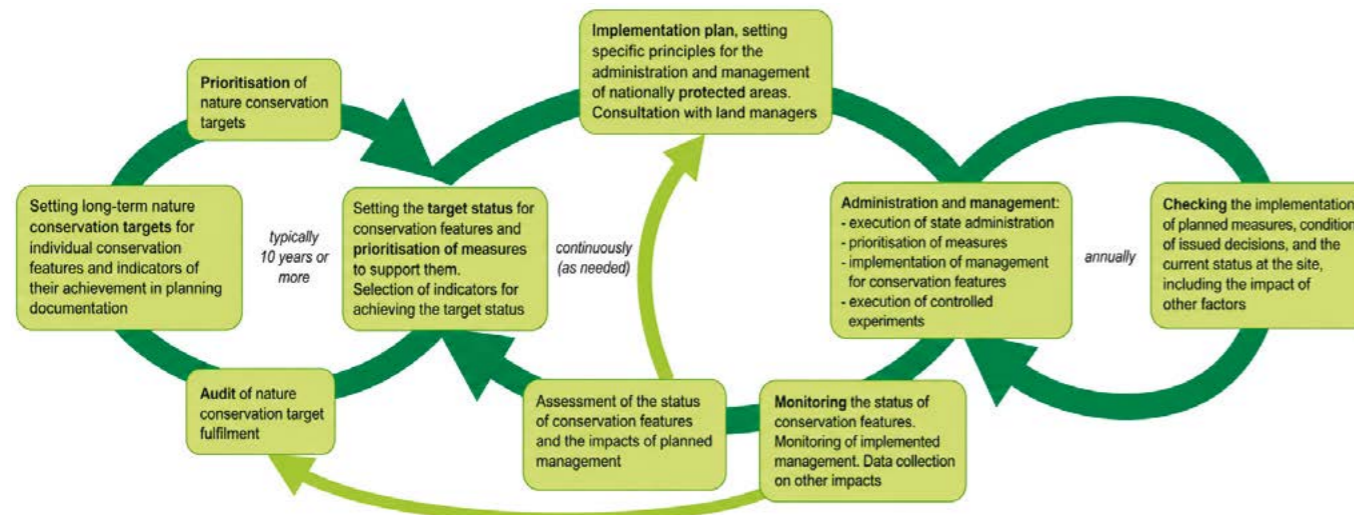
Thanks to new tools within the Nature Conservation Information System, we can more effectively translate data into concrete, practical recommendations in the management plans.

We publicly share the results of the conservation feature status assessments across the entire territory on the Nature Conservation Information System Portal.



*The endemic Moravian pink (Dianthus moravicus) is among the species of European importance whose status we monitor.*

## ADAPTIVE MANAGEMENT OR THE EFFECTIVE MANAGEMENT CYCLE



## REGIONAL VISITS

We visited all **14 regions** of the Czech Republic, where we introduced the methodology for assessing the status of species, and particularly natural habitats, to regional authority staff. These meetings helped to better explain the assessment procedures in practice and opened up space for discussing specific experiences from individual regions.

Our visits enabled us to:

- Seek ways to improve the unfavourable or bad status of habitats and species of European importance within Natura 2000 sites, working in cooperation between regional authorities, the Ministry of the Environment (MoE), and the Nature Conservation Agency of the Czech Republic (NCA CR).
- Utilise newly available data in jointly setting target conditions for selected habitats.
- Expand the methods for securing management of Natura 2000 sites across individual regions.
- Standardise the status assessment of conservation features.
- Compare assessment results with the real situation on the ground at the sites.
- Formulate suggestions for solutions to be addressed by the MoE or the NCA CR.



Did you know that as of the beginning of 2026, there are 1,112 SCIs/SACs and 42 SPAs registered in the Czech Republic (some of which overlap), **covering approximately 14 %** of the national territory, and that the regions manage or participate in the management of 879 of them?

1 *Field visit to the Ústí nad Labem Region*

2 *Meeting at the South Moravian Regional Authority*

3 *Field visit to the Vysočina Region*



## SETTING MANAGEMENT PRIORITIES

Financial resources for nature conservation management are limited. Therefore, one of the project's goals was to design a system that enables their most effective allocation based on actual conservation needs.

### HABITATS

For natural habitats (biotopes), we considered the following main criteria:

- their level of threat according to the Red List of Habitats
- the need for active management
- their potential for restoration.

Based on the evaluation of these criteria, we divided the habitats into five categories:

- **Category I** includes the **24 most threatened habitats**, such as inland salt meadows, fens, petrifying springs, mountain Nardus grasslands, orchid-rich grasslands, steppes, or sand dunes. Management of these habitats should always be the highest priority.
- **Category II** covers the conservation features of Sites of Community Importance (SCIs) / Special Areas of Conservation (SACs) and small-scale nationally protected areas, for which optimal, or at least minimal, management should be ensured.
- Conversely, **Category V** includes habitats where funding through agricultural or forestry subsidies is sufficient.

1 Meadow petrifying spring, Jalovcová stráň Nature Reserve

2 *Gentianella obtusifolia* subsp. *sturmiana*

3 *Phengarsis* sp. on *Sanguisorba officinalis*

### SPECIES

We applied a similar principle to the prioritisation of species, where we distinguished four categories:

- **Category I** includes species with an approved recovery programme or a regional action plan (a targeted programme of measures to support a specific species).
- **Category II** covers species that are conservation features of individual small-scale nationally protected areas, SCIs/SACs, or SPAs.

The proposed system underwent testing at sites managed by the NCA CR. In the future, however, it can also be utilised by other entities, such as regional authorities.



Did you know that the Dusky Large Blue butterfly (*Phengaris nausithous*) requires not only a specific host plant for its survival – the Great Burnet (*Sanguisorba officinalis*) – but also the presence of a specific species of ant, which „adopts“ its pupae into their nest? For the butterfly to survive, it is crucial to maintain narrow meadow margins and other small enclaves with a suitable vegetation structure. Extensive, uniformly mown meadows are not suitable for it. (Pech et al., 2025)



## COOPERATION WITH LANDOWNERS AND LAND USERS

Long-term conservation of habitats and species of European importance at these sites is only possible with the active involvement of landowners and land users.

- We concluded **2,465 management agreements** with landowners or land users.
- To support communication, we created the methodology “**Best Communication Practices in Nature Conservation**”, which is utilised by both the regional offices of the NCA CR and regional authorities. Training in the communication skills required for negotiating with landowners was completed by **151 staff members** from the regional offices of the NCA CR.
- To streamline negotiations, we prepared **26 factsheets** that introduce SCIs/SACs, the species and habitats they protect, and simultaneously outline the options for financial support for their management.
- As a gesture of gratitude to landowners and users, we published **4 brochures** about SCIs/SACs within Protected Landscape Areas, specifically in Železné hory, Litovelské Pomoraví, Třeboňsko, and Kokořínsko – Máchův kraj. These brochures also serve to familiarise visitors with these valuable sites.



- 1 Grazing by a mixed flock of sheep and goats
- 2 *Euphydryas aurinia*



## MANAGEMENT MEASURES

Most habitats and species of European importance are vitally dependent on some form of management.

1. Prior to actual implementation of any management, **sites are selected** according to the conservation priority of the specific habitat or species.
2. This is followed by the implementation of management measures that aims to either restore, improve or maintain its conservation status. These range from mowing, grazing, scrub clearance to both forest and solitary tree planting. **Managements** are either **one-off** or **recurring**.
3. Subsequently, we **evaluate** the implemented management, monitoring its impact on individual habitats and species.

Specific examples of measures for SCIs/SACs and SPAs:

- **Třeboňsko SPA** – restoration of islets; nesting site of the Common Tern (*Sterna hirundo*).
- **Velký a Malý Bezděz SAC** – veteranization of selected trees to support the Rosalia longicorn (*Rosalia alpina*) beetle, which depends on dead wood.

To secure these measures, we concluded **1,296** agreements, averaging **120** SCIs/SACs and SPAs annually. The total value of these measures amounted **to CZK 105,540,311** and covered an area of **4,144 ha**. These costs were covered by subsidies originating from European sources.



Did you know that dry grasslands can lose up to 20 % of their plant species, including threatened ones, if mowing is not carried out with their needs in mind? Conversely, properly executed mosaic mowing helps maintain their biodiversity. (Chytrá et al., 2024)

Islet on the Koclířov pond



## RESTORATION OF TRADITIONAL FOREST MANAGEMENT PRACTICES

**Coppicing** involves felling trees at a younger age and growing new ones primarily from stump sprouts. In this way, since 2020, we have restored forests at **10 sites** within the Hodonínská Důbrava SAC and the Karlštejn – Koda SAC.

In the coppiced areas, we **raked and removed leaf litter** from a total area of **3 ha**.

**Forest grazing** has been carried out since 2022 at **13 sites** across the Czech Republic, for example in the Údolí Jihlavy SAC, Oblík – Srdov – Brník SAC, Blanský les SAC, Střední Povltaví u Drbákova SAC, Milovice – Mladá SAC, Žehuňsko SAC, Zubří SAC, and Beskydy SAC.

These and other **innovative management practices** build on historical or international experience, scientific literature, and hitherto rare contemporary examples in the Czech Republic.

- Current findings indicate that they can have a positive impact on selected conservation features while simultaneously represent an effective approach in terms of costs, time, and human resources required.
- For some conservation features, such as **oak-hornbeam woodlands**, these are the most appropriate known methods for their long-term conservation.

### Legal framework

Up until recently, the legislative regulations have complicated the application of these management methods. The amendment of the Forest Act in 2025 (Act No. 250/2025 Coll.) simplifies the possibilities for practical application and creates **more favourable conditions for implementing at least some innovative practices**.

1,2 Wood-pasture in the Oblík – Srdov – Brník SAC

3 Stump sprouts





1



2



3



4

## EXPERT SEMINARS ON THE MANAGEMENT OF NATURA 2000 SITES

We organised expert seminars **focusing on current and challenging topics** regarding the management of species and natural habitats of European importance.

One seminar was held each year of the project's implementation (**7** in total). The topics that received the greatest response focused on the use of burning as a habitat management tool (controlled burning of vegetation), the impact of overpopulated ungulates on biodiversity, and the management of alpine treeless zones.

The seminars were primarily aimed at the expert staff of the NCA CR.

- 1 Seminar on burning – The field trip of the seminar “Fire: A Good Servant?” took place in Bohemian Switzerland (České Švýcarsko).
- 2 Seminar on alpine treeless zones – During the field trip of the seminar on the management of alpine treeless zones, we visited, among other places within the Praděd SAC, the slope above Ovčárna, where sheep grazing takes place, and Velká kotlina, where bilberry bushes were being cleared.
- 3 Seminar on overpopulated game – During the field trip of the seminar “The Issue of Biodiversity Damage by Overpopulated Ungulates”, we met with representatives of the Židlochovice Forest Enterprise within the Milovický les SAC.
- 4 Seminar on pond assessment – Field demonstrations of pond assessment during the seminar “Ponds in the Contemporary Landscape – Management, Functions, Assessment?” took place in the Naděje pond system, specifically at the Naděje and Rod ponds.

## EXPERT STUDIES ON CHALLENGING MANAGEMENT TOPICS

The site managers' working group of the One Nature project selected the topics for the expert studies at their regular meetings. The studies focused on challenging management topics and identifying the causes of failure in the conservation of specific target features.

In total, we commissioned **17 studies** from external experts, including academics. For example, the experts:

- studied the **impact of game** on conservation features in both forest and non-forest ecosystems,
- mapped the **status of natural forest stands** during bark beetle-induced dieback,
- analysed the **impact of different mowing regimes** on the species diversity of dry grasslands,
- **proposed a restoration plan** for degraded floodplain meadows,
- investigated the **impact of controlled burning** on heathlands.

- 1 *Forest interior in the Rejvíz SAC, a stand that died in 2019 – as captured several years later during the preparation of the study mapping the status of natural forest stands during bark beetle-induced dieback.*
- 2 *For the monitoring of beetles dependent on dead wood in the Rejvíz SAC, experts working on the study focused on the status of natural forest stands during bark beetle-induced dieback used a flight interception trap.*
- 3 *A stand of Yellow Iris (*Iris pseudacorus*) is characteristic of continental inundated meadows, captured during the preparation of the study on the restoration of degraded floodplain meadows.*
- 4 *One of the studies on the impact of game on conservation features dealt with assessing the vegetation status in the Čertoryje SAC.*
- 5 *As part of the study on the impact of fire management on heathlands, phytosociological sampling took place in the Tok SAC, Brda SAC, and the Jordán target impact area within the Brdy PLA.*



## NEW FINDINGS ON ECOSYSTEM FUNCTIONING

Ecosystems and their functions are one of the many basic prerequisites for human life as we know it today. Ecosystem services include, for example:

- food production,
- water retention,
- air cooling and purification,
- soil regeneration.

The value of individual ecosystem services can be measured in several ways:

- through public surveys,
- through biophysical measurements,
- by calculating economic value, for example, through quantifying flood damages.

All methods are highly complex, require an expert and comprehensive approach, and to this day are not firmly established in the Czech Republic.



Did you know that we have much more experience in measuring the value of ecosystem services in conventionally managed ecosystems (fields, forests, etc.) than in protected areas? Yet, preserving biodiversity (the variety of native species) is often cited as a prerequisite for the proper functioning of an ecosystem. Therefore, within the One Nature project, we focused on the role that nature conservation plays in the quality of the provided ecosystem services.

1 White Carpathians' meadow

2 Soil sampling

We have written **19 research articles**, **two book chapters**, and **two separate books**. We are still working on further publications, which will be released even after the project has ended. We have also **presented our results** at more than **40 scientific conferences**.

For example, we found that:

- When the value of sequestered carbon is included in the economic value of a forest alongside the price of timber, it proves more beneficial to let the trees grow for up to 20 years longer than is customary in commercial forests (today, forests are most harvested at around 110 years of age). (*Melichar, Škopková, Mácová, 2026*)
- Species-rich meadow reserves accumulate significantly more carbon in the soil than surrounding conventionally managed meadows. (*Murindangabo et al., 2026*)
- Although it is often assumed that more forests in the landscape mean cleaner water sources, evidence from Czech data are inconclusive. This underscores that relationships between ecosystems and human activities, fundamental to ecosystem services, can be highly complex and very challenging to quantify reliably. (*Horváthová, Mácová, Krpec, 2025*)
- When a spoil heap is left to naturally regenerate into a forest, it will be of higher quality than one established by planting. Thinning, in turn, increases its recreational value. (*Melichar et al., 2022*)

These and other conclusions are a clear example that nature conservation can, in addition to supporting biodiversity, bring a number of other, often overlooked, benefits.



## A COMPREHENSIVE VIEW OF SOCIO-ECONOMIC BENEFITS OF NATURE AND ECOSYSTEM SERVICES

**The methodology for assessing the benefits of nature** helps to understand how and to what extent ecosystems and their functions are beneficial to humans.

- It facilitates orientation in the terminology, principles, and broader context of this rapidly evolving scientific field.
- It responds to practical questions, such as how to achieve clear results, how to evaluate the effectiveness of nature management, or how to use the results for decision-making and communication with other stakeholders.

**Dynamic ecological-economic modelling of nature's benefits** links the functioning of ecosystems with their benefits to society.

- Within the project, we developed a prototype model for forest ecosystems and their ability to regulate the climate.
- We **programmed an online calculator** that, based on the aforementioned model, calculates economic values from biophysical indicators.

**Integration with law and administrative practice** is a fundamental improvement of the methodology.

It demonstrates how ecosystem service assessments and their results can be incorporated into specific administrative agendas, such as:

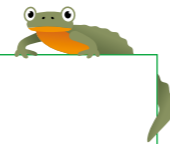
- EIA (Environmental Impact Assessment),
- spatial planning,
- assessment of land take,
- forest management planning.

This approach is based on legal analyses, existing administrative practices, and case law.

It's a bit more complex than it seems. See for yourself how we calculate the benefits of forests for humanity.

$$\max_{T \in [t_1, \infty)} J(\mathbf{y}_0, T) = \pi(\mathbf{h}_T) \cdot \gamma^T + \sum_{t=0}^T Q_t(\mathbf{y}_t, \mathbf{h}_t) \cdot \gamma^t$$

$$Q_t = p_{c,t} \cdot \phi \cdot \{B_{t+1}(\mathbf{y}_{t+1}) - B_t(\mathbf{y}_t) + [1 - \alpha_j(r)] \cdot [D_{\mu,t}(\mathbf{y}_t) + D_{\varphi,t}(\mathbf{h}_t) + H_{\psi,t}(\mathbf{h}_t)]\}$$



## PUBLIC PERCEPTION OF NATURE CONSERVATION AND LANDSCAPE MANAGEMENT

Within the project, we conducted extensive research focused on the attitudes, perceptions, knowledge, and preferences of the public regarding nature conservation and the benefits provided by the landscape.

**Perception of nature conservation in protected areas, including SCIs/SACs and SPAs:**

- Support for protected areas is very high across different groups – including local residents, visitors, and entrepreneurs.
- People value the benefits of these areas for nature and quality of life, but they are also sensitive to potential restrictions associated with conservation.
- Terms related to the Natura 2000 network are not very well known to the public, which can influence understanding and attitudes.

**Assessment of forest and meadow landscape management:**

- Perception of the management being carried out depends on whether or how the measures were explained and presented.
- Unconventional measures, such as mosaic mowing of meadows or forest grazing, are rated more favourably by the public if accompanied by information about their ecological significance.

**Location matters: where the public supports nature conservation across the republic**

(*Badura and Schaafsma, 2026*)

- The public strongly supports nature and biodiversity conservation and, at the same time, recognises that such measures require financial resources.
- People generally show higher support for measures in their immediate surroundings, but for significant improvements in the state of nature, distance may not be as important; the quantity (quality) of nature near their home can also have an influence.
- The results will be used to create priority maps showing where nature management may receive the greatest public support and where, conversely, more communication and explanation are needed.

Detailed results are presented at conferences and compiled into expert publications (e.g., *Jehlička et al., 2025*).

## CASE STUDIES

### LOCAL STAKEHOLDERS EVALUATE THE BENEFITS OF NATURE

Between 2022 and 2024, a series of participatory workshops took place within the project in the Třeboňsko, Slavkovský les, and Křivoklátsko PLAs. The aim was to identify **what benefits nature provides in these areas and how they are perceived by local people**.

**More than 140 representatives** from various sectors took part in the discussions – local government, farmers and foresters, entrepreneurs and researchers.

The workshops combined **expert approaches with local experience**, providing not only an overview of priorities but, more importantly, a deeper understanding of the different perspectives on the landscape and how individual stakeholders can influence its benefits to society through their decisions.

### WHICH BENEFITS ARE MOST SIGNIFICANT FOR LOCAL STAKEHOLDERS AND HOW DO THEY INTERACT?

- In all three locations, participants identified **regulating and non-material benefits of nature as the most important**. The highest significance was attributed to **water regulation** (quantity and runoff), but also to **benefits associated with the preservation of future options** and with **learning** and **inspiration**.
- At the same time, stakeholders most frequently mentioned the conflict between material production and the protection of natural habitats or water regulation in the landscape.
- Overall, local stakeholders prioritise those ecosystem services that support the **long-term functioning of the landscape**, its **balanced use**, and **quality of life**.

Diagram of the 4 workshop rounds



### WHO CAN INFLUENCE NATURE'S BENEFITS TO PEOPLE AND WHAT DOES IT MEAN FOR PRACTICE?

According to the participants, professions such as nature conservation, forestry, and agriculture have the greatest influence on the landscape.

**Spatial planning** and **specific management** interventions also play a crucial role. Municipalities and entrepreneurs have a significant, though often unrecognized, impact.

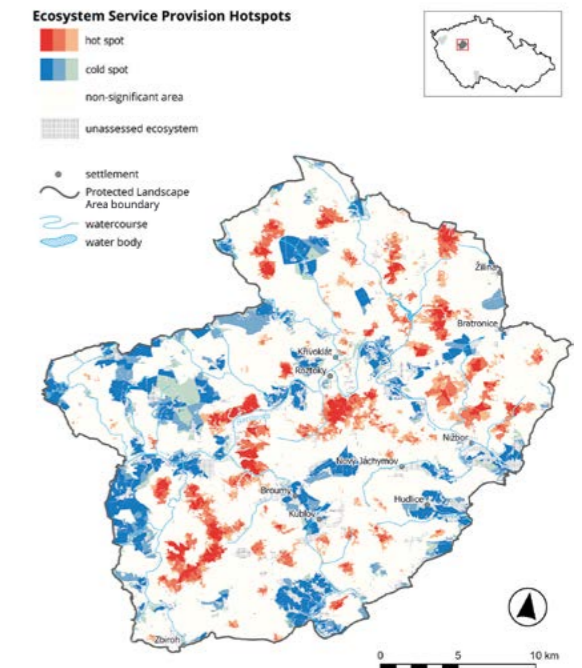
The workshops confirmed that while local stakeholders may not know the theory behind ecosystem services, they deal with them daily in practice. The joint discussion helped clarify which benefits are key for their territory, where they complement each other, and where conflicts arise.

The most significant benefits of nature to people in individual locations

Ranking	NCP	Priority
1.	Regulation of freshwater quantity, location and timing	High importance
2.	Maintenance of options	
3.	Learning and inspiration	
4.	Regulation of freshwater quality	
5.	Habitat creation and maintenance	
6.	Physical and psychological experiences	Medium importance
7.	Supporting identities	
8.	Formation and protection of soils	
9.	Regulation of hazards and extreme events	
10.	Regulation of detrimental organisms	
11.	Regulation of climate	
12.	Regulation of air quality	
13.	Pollination and seed dispersal	Low importance
14.	Materials	
15.	Medicinal and genetic resources	
16.	Food and feed	
17.	Energy	

Regulation Non-material Material

Map of benefit provision hotspots in the Křivoklátsko PLA



Benefits are ranked by average rating on a scale of 0 – 4 (somewhat unimportant to very important).





## NATIONAL PLATFORM FOR ECOSYSTEM SERVICES (NPES)

The NPES was established as a platform for **sharing information, experience, and knowledge regarding ecosystem services**. Its goal is to bring together diverse perspectives on ecosystem services and to raise awareness about the possibilities of their application in decision-making and practice.



Following extensive consultations with key stakeholders (*Daněk et al., 2026*), the platform launched its activities in 2022.

The NPES brings **together nearly 60 institutions** from public administration, academia, educational institutions, and non-governmental interest or professional organisations.

Between 2022 and 2026, **five NPES meetings** were held, each attended by 40–50 institutional representatives. Participants valued the opportunity to discuss issues with stakeholders from various fields whom they would not normally encounter. These experiences confirm the important role of the ecosystem services concept as a tool that enables a holistic approach to viewing and discussing numerous environmental issues across disciplines and sectors.

The long-term operation of the NPES platform can help better integrate scientific findings into decision-making and policies, bridge the gaps between disciplines, and support the protection of nature and ecosystems. Simultaneously, it contributes to the implementation of the Action Plan for the National Biodiversity Strategy of the Czech Republic 2030.

*The fourth NPES meeting, 27 May 2025, CAS Prague*

## TRAINING AND E-LEARNING FOR NATURE CONSERVATION PROFESSIONALS

The project developed a systematic training programme for staff of nature conservation authorities (primarily regional authorities, national parks, military districts, and the Czech Environmental Inspectorate). Four training modules were created, focusing on:

- communication in nature conservation,
- ecosystem services,
- management and monitoring,
- the Natura 2000 network.

Between 2020 and 2025, **18 training sessions** were held, attended by a total of **577 employees** from state administration institutions, protected area administrations, and other organisations. There was significant interest, particularly in courses focused on practical site management and field excursions.

To ensure that knowledge remains accessible in the future, **10 e-learning courses** were also developed, available on the NCA CR educational platform. These are based on the training sessions held and are supplemented by presentations, videos of lectures and field work, as well as ongoing and final tests.

Experience from the project shows that the combination of face-to-face seminars and online courses is an effective way to share new findings and strengthen the professional capacity of nature conservation staff.

- 1 From the seminar on the eradication of invasive woody species
- 2 *Rosalia alpina*
- 3 Seminar participants tried drilling into a black locust trunk.





## ROUND TABLES: SEEKING PATHS TOWARDS SUSTAINABLE NATURE FINANCING

Between 2022 and 2023, we organised three **round tables**, bringing together representatives from state administration, non-profit organisations, subsidy programme administrators, and the financial sector. The aim was to open a discussion on **how nature conservation and the management of the Natura 2000 network are financed in the Czech Republic**, identifying what works in the current system and where it encounters obstacles.

The discussions focused primarily on three topics:

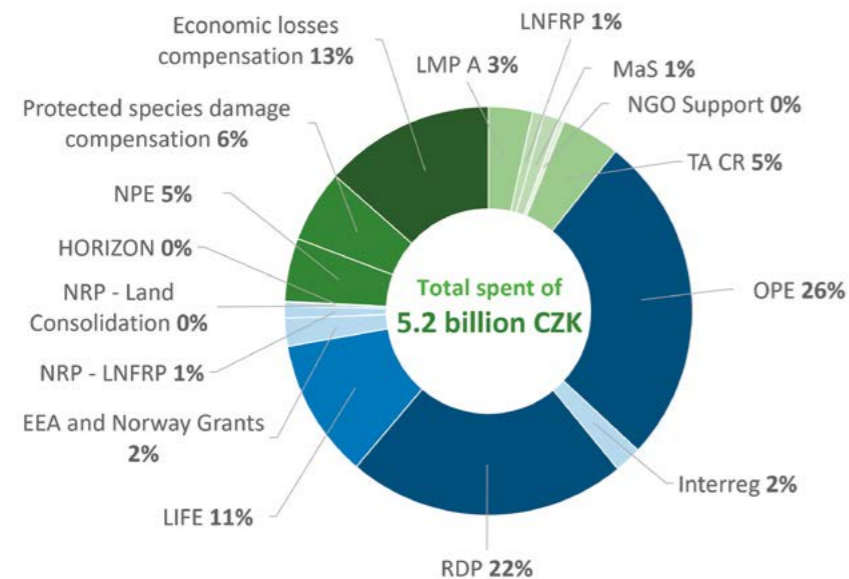
- How to manage the pre-financing and co-financing of projects.
- How to ensure their long-term sustainability.
- How to better define priorities in a situation where available resources are insufficient for all necessary activities.

*From a round table discussion*

## FINANCING NATURE CONSERVATION: WHERE WE ARE AND WHERE FUNDS ARE LACKING

Nature conservation does not rely on goodwill alone – **it cannot function in the long term without stable financing**. To clarify how much funding is required for the management of the Natura 2000 network, the Prioritised Action Framework (PAF) for the Czech Republic was developed. It estimates that for the **2021–2027** period, the necessary measures will cost approximately **17.5 billion CZK**.

However, an analysis of the use of financial instruments between 2021 and 2023 showed that **these needs are only partially covered**. Although European and national programmes bring significant resources into nature conservation, a substantial funding gap remains – particularly for site management, management planning, and the long-term maintenance of measures for the protection of species and habitats. The analysis thus highlights the lack of resources for specific areas of activity.



## HOW CAN WE ENSURE THAT NATURE AND LANDSCAPE MANAGEMENT IS SECURED IN THE LONG TERM?

Discussions with experts and financial analysis suggest several possible paths:

- Strengthening stable national financing, particularly under the remit of the Ministry of Agriculture, and better **linking it with European funds**.
- **Simplifying** administration and strengthening the capacities of local authorities to ensure that available resources can be used effectively.
- **Financing the management of sites and the activities of non-governmental organisations** is a fundamental prerequisite for long-term nature conservation, which one-off projects alone cannot ensure.

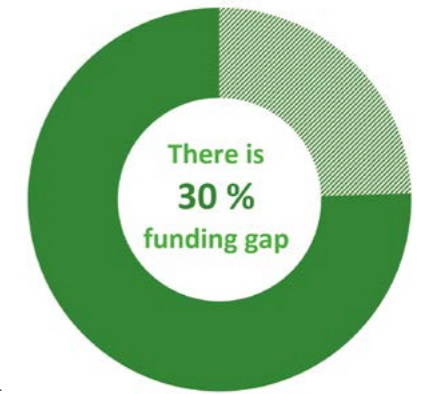


Photo from the round table



### Jak na dotace pro přírodu a krajinu?

Chtěli byste se zapojit do péče o přírodu a využít k tomu dostupnou finanční podporu? Aktualizované stránky [dotace.nature.cz](https://dotace.nature.cz) vás provedou možnostmi získání podpory jak z domácích, tak z evropských programů. Na webu najdete otevřené výzvy, potřebné dokumenty k podání žádosti i realizaci projektu – vše přehledně na jednom místě.

[Podrobnosti >](#)

[dotace.nature.cz](https://dotace.nature.cz)

### Aktivity v čase

20. 9. 2023  
Setkání v Estonsku – inspirace pro projekty LIFE

11. 9. 2023  
Kdo se stará o Naturu 2000: Újezdní úřady

Újezdní úřady (ÚÚ) jsou jedním z pěti orgánů

### Videa projektu Jedna příroda

Hodnoty přírody – dokumen...

### Akce nejen projektu Jedna příroda

26. 09. 2023  
Komunikace v ochraně přírody: Dobrá praxe z Českého lesa a ze Šumavy



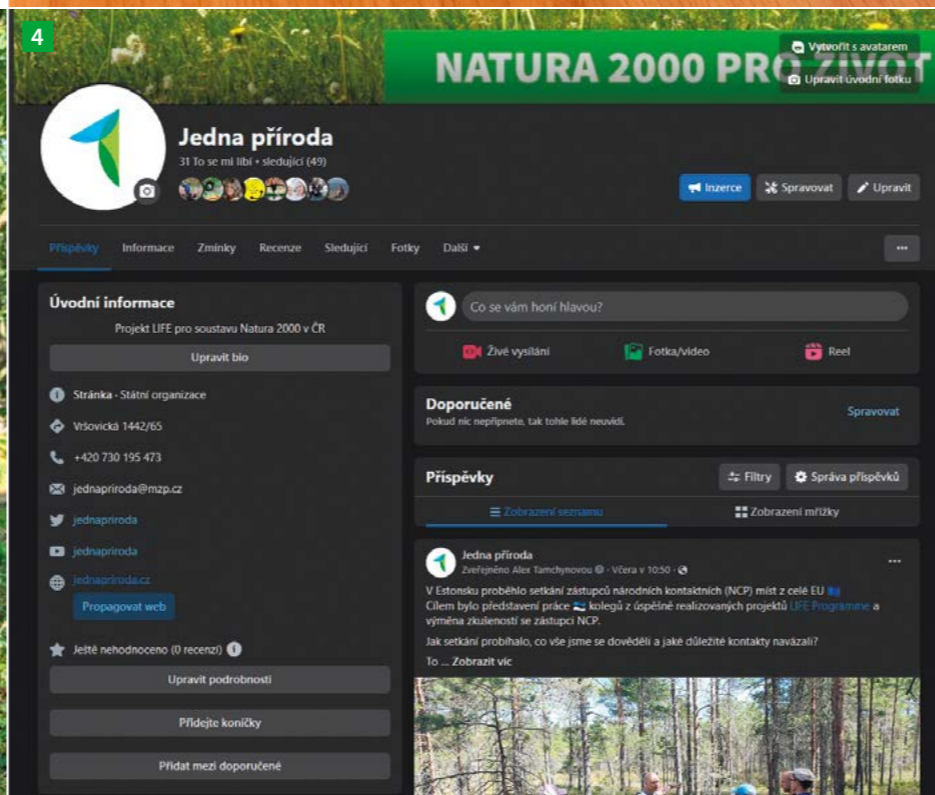
## AWARENESS RAISING AND COMMUNICATION

We published **seven information leaflets** that present the Natura 2000 network of protected areas and the benefits of nature to people from various perspectives. They are primarily aimed at nature visitors, landowners, and managers, as well as staff of nature conservation authorities.

In Sites of Community Importance (SCIs) / Special Areas of Conservation (SACs) and Special Protection Areas (SPAs), we also installed **77 types** information boards, which explain the significance of a specific site, its management methods, and introduce the institutions or organisations that care for the area.

For the wider public, we published ten popular science articles and prepared **14 types** of practical promotional items, which serve, for example, as a gesture of thanks to cooperating land managers and partners, at conferences, or as prizes in competitions.

We regularly provided updates on project activities via the website and social media (Facebook and Twitter/X). A project YouTube channel was also established, featuring videos of selected activities and the **documentary The Values of Nature**, which presents the topic of ecosystem services in an accessible form in both Czech and English versions.



- 1 Websites
- 2 Promotional items (sprout pencils, magnetic bookmarks, notebooks...)
- 3 Information board
- 4 Facebook site

## CONCLUSION AND ACKNOWLEDGEMENTS

Over its seven years, the LIFE One Nature project has significantly improved the understanding of ecosystem services and brought the importance of nature conservation closer to the public. The project contributed to the protection of species and habitats within the Natura 2000 network in the Czech Republic and helped prevent the loss of biodiversity. It practically demonstrated the values that nature provides to human society – from water and carbon retention to sustainable production and recreation – and why it is crucial to consider these benefits when making decisions about landscape use.

None of this would have been possible without the strong support of the collaborating institutions backing the Ministry of the Environment as the coordinating partner. The Nature Conservation Agency of the Czech Republic, the Charles University Environment Centre, the Global Change Research Institute of the CAS (CzechGlobe), and the Biology Centre of the CAS played significant roles in the successful implementation of the project. Therefore, a great deal of thanks goes to them, as well as to landowners and land users and many cooperating experts, for ensuring the monitoring and management of protected areas, evaluating ecosystem services, and for their work in education, promotion, and project management.

*Corydalis sp.*



## AWARDS

The project was ranked among the top 10 LIFE projects of 2023 as part of the **LIFE Highlights 2023**. The European Climate, Infrastructure and Environment Executive Agency (CINEA) highlighted the project's successful fulfilment of its objectives contributing to the protection of nature and the landscape, as well as its outputs aimed at the general public. These include the documentary film **The Values of Nature**, which received the Food and Agriculture Organization of the United Nations (FAO) Award at the Agrofilm festival.

**Title:** Integrated LIFE project for Natura 2000 in the Czech Republic, LIFE-IP: N2K Revisited, called One Nature

**Project Number:** LIFE17 IPE/CZ/000005

**Coordinating beneficiary:** Ministry of the Environment of the Czech Republic

**Overall budget:** € 20 369 945, of which 60 % is funded by the EU through the LIFE Programme

**Implementation period:** 1<sup>st</sup> January 2019 – 31<sup>st</sup> December 2026

**Partners:** Nature Conservation Agency of the Czech Republic, Biology Centre CAS, The Charles University Environment centre, CzechGlobe





Ministry of the Environment  
of the Czech Republic



Contributing institutions:

Published by The Ministry of the Environment of the Czech Republic 2026  
Vršovická 1442/65, Praha 10, 100 10  
<http://mzp.gov.cz>

© The Ministry of the Environment of the Czech Republic  
Editors: Alexandra Tamchynová, Ondřej Vítek  
Authors: The One Nature LIFE Project Team  
Photos: The One Nature LIFE Project Team, Archive NCA CR, Michal Gálik  
Graphic design: 2123design s.r.o.  
Print: ASTRON print, s.r.o.  
Print run: 300 copies  
Prague, 2026  
First edition

This report was published by the Ministry of the Environment of the Czech Republic as part of the One Nature project (LIFE-IP:N2K: Revisited, LIFE17/IPE/CZ/000005), supported by the LIFE financial instrument of the European Union. The data and information contained herein express only the views and opinions of the One Nature project implementation team. The European Commission is not responsible for any use that may be made of the information contained in this report.

ISBN: 978-80-7212-689-7